

**Lutheran Child and Family Services Board of Directors**

**Thomas Grau**  
President

**Larry Hill**  
Secretary

**Jim McKneight**  
Treasurer

**Lewis Beckwith**  
**Ann Diefenthaler**  
**George Hurd**  
**Adam Johnson**  
**Aaron Miller**  
**Zonda Stead**  
**Joseph Zielinski**

**The Foundation for Lutheran Child and Family Services Board of Directors**

**Robert P. Kassing**  
President

**Tania T. Deng**  
Vice President

**Sven Schumacher**  
Secretary

**Cheryl Troyer**  
Treasurer

**Lewis D. Beckwith**  
**Thomas Grau**  
**Martha Schmidt**  
**Jim Stuck**  
**Ron Thieme**

**Executive Staff**  
**Sven Schumacher**  
LCFS Executive Director  
**Rachael Fisher**  
MSA Executive Director  
**Kendra Belden**  
Director of Residential Services  
**Bill Wischnowski**  
Director of Community Based Services

**Our Mission:**  
*Engaging and Empowering Children and Families with Love, Compassion, Faith and Support*

# EARN \$250 for LCFS!

LCFS has long benefited from the support of Thrivent Financial and its members. Thrivent is currently supporting the initiatives of ActivateIndy, a partnership between local nonprofits working collaboratively to serve the community by providing a new way to showcase essential volunteer opportunities of each participating organization. Groups, including churches, businesses, families, and individuals, can access these experiences easily at [www.activateindy.galaxydigital.com](http://www.activateindy.galaxydigital.com) to help support LCFS program needs.

To promote this platform, Thrivent is providing “challenge funding” for the 1st quarter of 2020; **LCFS will receive \$250 for each volunteer group of 5 or more** who sign up through the website (at least 72 hours in advance of the event). LCFS has volunteer opportunities at the Sharing Place and other LCFS programs currently posted. To sign up your team, please visit the ActivateIndy website at [www.activateindy.galaxydigital.com](http://www.activateindy.galaxydigital.com).

**Thrivent Members can further expand their impact by forming an action team!** Action teams receive a kit that includes a \$250 VISA gift card that can be used to support the project they select. For more information on Thrivent Action teams, click on the “**Action Team Application**” tab which is found on the ActivateIndy site.

For additional information, please email us at [events@lutheranfamily.org](mailto:events@lutheranfamily.org).



# 2020 Brings New Programming Opportunities to LCFS

From preliminary groundwork completed in prior years, LCFS is able to fully embrace two new programming initiatives in 2020: Pando Aspen Grove of Community Heights and INSPIRE.



## Pando Aspen Grove of Community Heights

LCFS is pleased to report that we have initiated the purchase of property just across 16th street near our east-side campus for the development of a new housing project to serve youth ages 18-24, with a focus on those who are aging out of the foster care system. The new program, Pando Aspen Grove of Community Heights (Pando), will provide permanent housing solutions utilizing the Housing First model and comprehensive, voluntary, client-centered supportive services, giving young adults choices and opportunities to facilitate transformative experiences and outcomes and

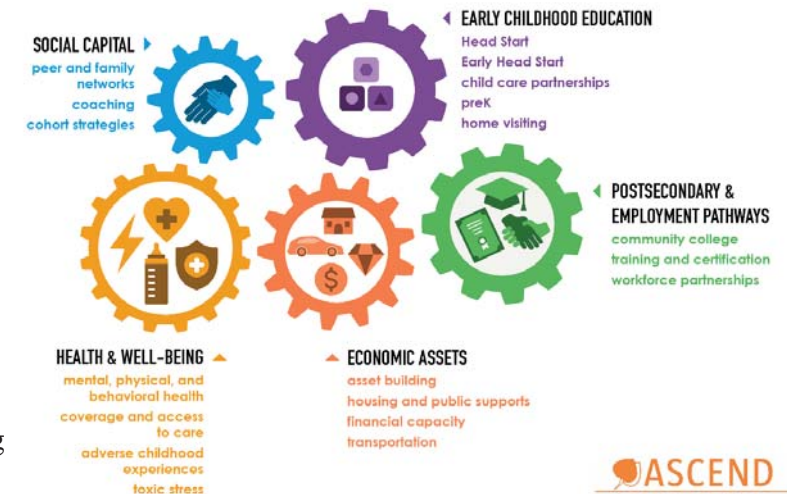
realize their full potential. This new construction project will feature thirty (30) 1-Bedroom Units with on-site property management and supportive services. The facility is within walking distance from Community Hospital East, Jane Pauley Center, and many other amenities. The target area is also located adjacent to a bus line for easy access to a wide array of community resources.

The project is a collaborative initiative between LCFS, the Foundation for LCFS, Community Health Network, TWG Development, and TWG Property Management. TWG Development will coordinate the construction process, which will be commencing early in 2020. The project is made possible by funding awards through the **Indiana Housing and Community Development Authority (IHCA)**. The Pando project received Low-Income Housing Tax Credits totaling over \$8.4 M and a grant from the Housing Trust fund of \$800,000, which are projected to fully cover the cost of construction.

## INSPIRE

LCFS, in collaboration with Community Health Network (CHNw), has teamed-up with Paramount Schools of Excellence (Paramount) for the innovative, collaborative INSPIRE (Identify Needs, Support Potential, Increase Resiliency & Empowerment) program. Through INSPIRE, LCFS will help families gain the skills/resources needed to escape the cycle of poverty via improved education, enhanced employment, increased social capital, and optimal health/mental health status.

Through the generosity of grant funds from the **United Way of Central Indiana’s Family Opportunity Fund**, LCFS expects to serve approximately 30 families (100-125 individuals) in the first year of INSPIRE operation. Paramount, the highest performing school corporation in Indiana, utilizes a multi-tiered system of educational support to ensure all students have equitable access to a high-quality education; they will focus on youth education, health/well-being, and social capital. LCFS, in partnership with CHNw, central Indiana’s leading provider of behavioral health care, will address adult services to support education, workforce/economic development, health/well-being, and social capital as well as family outcomes related to economic development and social capital. The program is currently enrolling families referred by Paramount and will utilize the 2Gen model for service delivery. This is an outstanding opportunity to help our clients reach their goals!



SOURCE: ASPEN INSTITUTE – ASCEND NETWORK:  
[HTTPS://ASCEND.ASPENINSTITUTE.ORG/TWO-GENERATION/WHAT-IS-2GEN/](https://ascend.aspeninstitute.org/two-generation/what-is-2gen/)

## Christmas Memories 2019





Non-Profit Organization  
U.S. Postage Paid  
Indianapolis, IN  
Permit # 721

Winter 2020

Lutheran Child and Family Services  
1525 N. Ritter Ave. Indianapolis, IN 46219



The Voice is published three times a year to share information about our ministries and programs with all our friends and supporters.

Questions or comments?  
Email [develop@lutheranfamily.org](mailto:develop@lutheranfamily.org), or call  
(317) 359-5467

Visit us online! [www.lutheranfamily.org](http://www.lutheranfamily.org)  
Facebook: The Foundation for Lutheran Child and Family Services  
Twitter: @lutheranchild



# The Voice

## Happy New Year!

The LCFS staff have enjoyed time over the holidays with our friends and families and we would like to take the opportunity to express appreciation and gratitude for the gifts of friendship and support from all our volunteers, donors, and stakeholders. We are ready for a new year, a new decade, and new opportunities to fulfill our mission of *Engaging and Empowering Families and Community with Love, Compassion, Faith, and Support.*

We are energized to continue our longstanding programs, such as Lutherwood, Emergency Shelter Care, Trinity House, Home-based services, and the Sharing Place. Additionally, 2020 brings many new possibilities to LCFS: we are eager to continue implementing our new INSPIRE program, we are thrilled for the opportunity to begin the process of developing the Pando project, and we are motivated to connect with collaborating churches to investigate new opportunities to serve the community. LCFS will be sharing more information on these exciting new ventures throughout the coming months.

As LCFS continues to develop programs and services, it may be helpful to share more information about a service model that has been embraced both in our community and across the country: the “Two-Generation Approach” (2Gen), which considers the entire family unit when designing services. This model is championed by the Aspen Institute’s Ascend Network. Over the next year, we will be sharing more about this model and how it can effectively serve children, families, and the community as a whole.

According to the Aspen Institute’s Ascend Network website: “Two-generation approaches focus on creating opportunities for and addressing needs of both children and the adults in their lives together. The approach recognizes that families come in all different shapes and sizes and that families define themselves...”



SOURCE: ASPEN INSTITUTE – ASCEND NETWORK: [HTTPS://ASCEND.ASPENINSTITUTE.ORG/TWO-GENERATION/WHAT-IS-2GEN/](https://ascend.aspeninstitute.org/two-generation/what-is-2gen/)

Stay tuned for more information on 2Gen services and new LCFS programming in the coming months!

Join the Club!  
Lutherwood Society (LWS) is a giving club for faithful donors who have committed to serve as a consistent, stabilizing force for the services and programs of LCFS through ongoing philanthropic support. Its purpose is to ensure our ability to respond to the growing needs of our community with appropriate services and facilities, providing a fiscally sound future for the organization with unrestricted resources.  
For more information or a pledge form, please contact us at (317) 359-5467 or email [events@lutheranfamily.org](mailto:events@lutheranfamily.org)

