

FACILITIES

Lutherwood is a psychiatric residential treatment facility (PRTF) located on a large picturesque campus on Indianapolis' near east side. Facilities include 4 open units, 2 secure units, school, outdoor playground, gymnasium, and administration building. Children gather for meals in a common dining hall and attend school in the community or in on-grounds classrooms with teachers certified in special education. Each unit includes bedrooms, living areas, bathrooms, staff workstations, kitchenettes, and group therapy rooms.

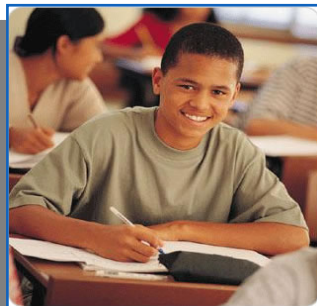
CHILDREN SERVED

Boys and girls age 6-21 who are experiencing chronic behavior and/or emotional problems and who may be in danger of hurting themselves or others are eligible for admission to Lutherwood. Although external abuse and neglect can be contributing factors, many of our residents are struggling to recover from internal neurological, biological or psychiatric disorders. Lutherwood also has specially trained and certified staff to deal with youth exhibiting sexually maladaptive behavior. Youth with addictions and trauma victims are also served.

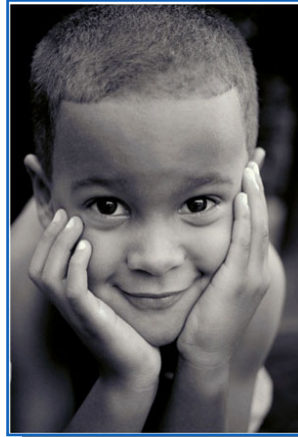
REFERRALS

Referral information should include: (1) a recent psychological and/or psychiatric evaluation; (2) social/developmental history; (3) educational testing scores and related information; (5) medical history; (6) permanency plan; (7) reason for the referral; (8) source of funding.

Our Admission Team includes psychiatry consultant (M.D.), clinical director, Lutherwood director, nursing manager and education coordinator. They review the information to determine if a program exists to meet the child's needs.



PROGRAMMING



Depending upon the acuity level of the child's problems, the danger the child presents to oneself or the community, and the level of family involvement, the child is assigned to either an Open or Secure Unit. The program in all units includes daily structure, individual, group and family therapies, academics, opportunities for spiritual growth, recreation, community involvement, and social relationships. Each aspect is designed to have a positive influence on each child's mind, body, and spirit.

Lutherwood provides a continuum of residential care and treatment to provide greater flexibility in meeting the needs of each child. The goal of the program is to help each child move toward less restrictive environments and seamlessly ease them back into their home and community.

Open Units (49 beds): require 24-hour supervision with a staff to child ratio of 1:4. If the child is referred directly to an Open Unit and a permanency plan is in place, the average length of stay is 6 months. Children placed on these units may be stepping down from the Secure Units or be a direct admission.

Secure Units (28 beds): require 24-hour supervision with a staff to child ratio of 1:4. An average stay is 1-3 months for treatment of dangerous behaviors before they are transitioned to a less restrictive setting. Youth receive evaluation and stabilization services for behaviors that place themselves, others or the community at risk.

Circle of Courage: a philosophy of care based on the Native American traditional values for positive youth development and focuses on four universal growth needs of all children: belonging, mastery, independence and generosity.

Specialized Services: evidence-based and best practice intervention for youth with sexually maladaptive behavior including girls and younger boys. Lutherwood also provides targeted treatment for youth with addictions or trauma victims.

TREATMENT PLANS

Reunification with the family and/or the community is a goal established for every child. Engaging and responding to families and their needs is priority for Lutherwood's consumer-focused treatment. Although many children accepted into Lutherwood's programs have multiple diagnoses, treatment plans focus on the "barriers to discharge" from the program to which the child is admitted. As part of the treatment planning, discharge planning focuses on those barriers and outlines the next steps toward treatment after the child leaves Lutherwood.

LUTHERWOOD ACADEMY

EDUCATION PROGRAM

Lutherwood Academy collaborates closely with Indianapolis Public Schools and is comprised of eight on-grounds classrooms serving children in grades K-12. Staffed by special education teachers from **Indianapolis Public Schools and Lutherwood Academy**, the classrooms operate on a full day educational schedule aligned with State standards and IPS pacing grids. Courses focus on reading, math, language arts, science, social studies, art, consumer sciences, and general skill building. **High school students can earn up to 6 credit hours per semester.**

Some Lutherwood children attend classes at nearby public schools. Scholarships are available to attend Lutheran parochial elementary schools or Lutheran High School of Indianapolis.

Our unique on-grounds, all-day educational program serves students who have documented behavioral problems and are unable to function in a public school setting. The primary goal of the program is to prepare the student to return to public school.

MISSION STATEMENT

In response to God's love and grace in Jesus Christ, Lutheran Child & Family Services of Indiana/Kentucky serves human needs with the support of the church and community by providing programs of compassionate care and counsel to enhance dignity and quality of life.

DAY TREATMENT

A day treatment program offers individualized academic and counseling services to students who continue to live at home, but who are at risk of being removed from public school because of the severity of their behavior problems. Day treatment participants are assigned to a Community-Based Therapist who helps the child make the transition back to a public school setting.

SPIRITUAL GROWTH

The admission procedure includes a spirituality assessment of each child to facilitate continued spiritual growth and help connect residents with community resources of their faith. While on campus, children are invited to attend weekly Bible study and chapel services. Religious preferences are respected and youth may attend a local place of worship of their choice. A chaplain is available on campus for children and their families.

Join us in June 2008 to celebrate the opening of our new dormitories!



Lutheran Child & Family Services

1525 N. Ritter Avenue
Indianapolis, Indiana 46219
www.lutheranfamily.org

Becky Hyde

Referral Relations Coordinator
317-359-5467 x326
Referral Fax: 317-322-4086

Kisha McKinley, MBA

Referral Relations Manager
317-359-5467 x201

Lutherwood Residential Treatment Center

Open and Secure Units • Short-term Stabilization
Psychiatric Residential Treatment Facility (PRTF)
Certified Teachers • Youth Mentoring • Independent Living/
GED Program • Group/Individual/Family Counseling

Community-Based Program Services

Special Needs Adoptions
Family Preservation/Reunification Services
Trinity House • Foster Care • Parenting Education
The Sharing Place—Material Assistance Support Centers



LUTHERWOOD

*A Residential Treatment
Center and Education Academy*



A ministry of

