

LUTHERWOOD TREATMENT CENTER

Lutherwood is a licensed **Psychiatric Residential Treatment Facility (PRTF)** that specializes in the care and treatment of children who exhibit chronic behavioral and/or emotional problems. Although external abuse and/or neglect can be contributing factors, many residents are also struggling to recover from neurological, biological or psychiatric disorders. Lutherwood also provides treatment by specially trained and certified staff in the areas of addictive behaviors and sexually maladaptive behavior.

ADMISSION CRITERIA

- Boys and girls age 6-21
- Suffering from the effects of physical, emotional, and/or sexual abuse
- Exhibiting symptoms of psychiatric disorders
- Failed hospitalizations or other less restrictive programs
- Referral from child care agencies, juvenile courts, mental health providers and individual families

LUTHERWOOD ACADEMY

Lutheran Child and Family Services in partnership with Indianapolis Public Schools offers a unique on-grounds school that provides:

- Full-day educational schedule
- Comprehensive curriculum for grades K-12
- Certified special education IPS teachers
- IPS programming and reviews

The primary goal of the program is to prepare the student to return to public school upon their successful discharge.

This program does accept day-student referrals from surrounding, non-IPS school districts.

VOLUNTEER SERVICE

Volunteers play a pivotal role in the development and treatment of the residents served by Lutheran Child and Family Services. Individuals and groups can serve in many different capacities, centered around our mission to serve human needs and provide compassionate care.

Volunteer service opportunities include:

- Youth and adult service projects
- Administrative support
- Church partnerships
- Tutoring
- Special events

To schedule a volunteer service project, request a volunteer application or more information, please contact Christina Schelle at (317) 359-5467 ext. 361 or cschelle@lutheranfamily.org

THE SHARING PLACE

The Sharing Place is a community assistance program that provides free food to individuals, children and families in need. Clients are eligible to receive free food every 30 days.

The Sharing Place is staffed by volunteers from the community, local service organizations and local churches. The food giveaway is made possible by donations from individuals, service organizations, congregations and local businesses. The Sharing Place is also a participant at the Midwest Food Bank, Gleaners Food Bank and Lawrence Hunger Coalition.

The Sharing Place is operated in partnership with First Trinity Lutheran Church at 5321 East 42nd Street. Please contact Nicole Anderson at 317-359-5467 ext 211 or nanderson@lutheranfamily.org for more information.

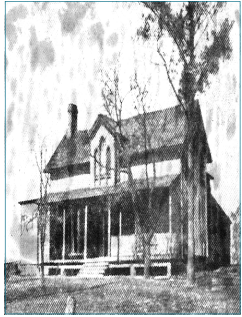


1525 North Ritter Avenue
Indianapolis, Indiana 46219
Phone: 317-359-5467
Fax: 317-322-4095

www.lutheranfamily.org



MISSION & MINISTRY



In response to God's love and grace in Jesus Christ, Lutheran Child and Family Services of Indiana/Kentucky serves human needs with the support of the church and community by providing programs of compassionate care and counsel to enhance the dignity and quality of life.

Founded as an orphanage in 1883, Lutheran Child and Family Services is a faith-based organization that provides a wide range of social services to support children in crisis and vulnerable families

Today, the core of our services include: a 24 hour residential treatment center for children; a K-12 public school in partnership with Indianapolis Public Schools; and a group home for young men.

While on campus we provide a spiritual assessment of each child to assist continued spiritual growth and help connect residents with community resources of their faith. In addition, children are encouraged to attend weekly Bible study and chapel services. A chaplain is available on campus for the children and their families. Religious preferences are respected.

Lutheran Child and Family Services is nonprofit 501(c)(3) member agency of United Way of Central Indiana, a member of the Lutheran Services in America organization and accredited by the Council on Accreditation.

COMMUNITY-BASED SERVICES

Lutheran Child and Family Services offers home-based counseling and case management to children (infants to 18 years) and their families. Brief, flexible and intensive services are the core elements of the family strengthening program.

Service outcomes include:

- Case Management Services
- Pre/Post Adoption Parent Counseling
- In-home SMY Therapeutic Treatment

Crisis management services are available 24 hours a day, 7 days a week., assisting children and advocating for families in meeting their basic needs and maintaining a unified household.

Trinity House is a community-based group home designed to help young men ages 14-21 learn the skills necessary to live as successful, independent adults.

Located next to Lutheran Child and Family Services' campus, Trinity House can house 10 young men. The highly structured program offers a family-style environment to support and guide the residents as they complete their education and prepare to enter the work force.

The program focuses on these key areas:

- Group living and interpersonal relationship skills
- Educational support and guidance
- Job skills and employment assistance
- Money management and personal budgeting
- Personal health management
- Preparation for independence

OUTREACH & SUPPORT

YouthBuild Indy is a personal development program that prepares youth for successful entry into the adult workforce. The program is offered in partnership with Indianapolis Private Industry Council, Indiana Department of Workforce Development and the Department of Labor.

YouthBuild Indy provides its participants:

- Intensive 9-month GED program conducted by Marion University
- Construction trades training and certification
- On-the-job construction training
- Job placement assistance and follow-up for one year

CA-PRTF (Community Alternatives to Psychiatric Residential Treatment Facilities) is a family program designed to assist youth with serious emotional challenges. The program provides in-home treatment services determined by the family.

Treatment services include:

- Training and support for the family and/or friends who help take care of the child.
- Respite care to provide a short-term break for caregivers
- Wraparound Facilitation including crisis/emergency planning and intervention
- Transportation support when related to the plan of care